

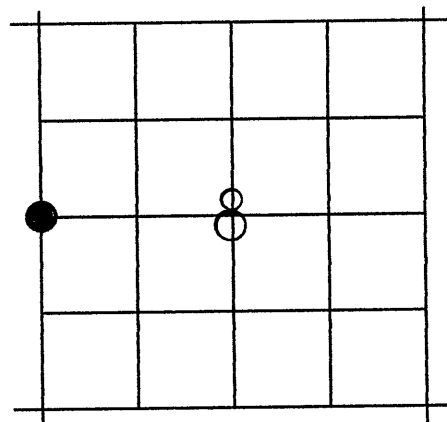
CORNER RESTORATION

W1/4 cor.
CORNER: Sec.8 TWP 8S RANGE 30E

ORIGINAL SURVEY BY: F. W. Campbell

CONTRACT NUMBER: 380

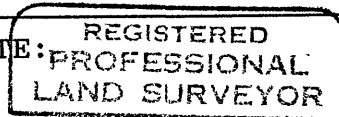
CONTRACT DATE: March 19, 1881
SUBSEQUENT SURVEY BY: D.I.Griffith, Co. Sur.,
re-established and monumented cor. in 1969,
see Map of Survey No. 154.



ORIGINAL DESCRIPTION: Set stone 13"x13"x11" for $\frac{1}{4}$ corner.
From which: A Pine 13" diam. bears S.35°E., 8 lks dist.
A Pine 6" diam. bears S.57°W., 46 lks dist.
Griffith's Record: At proportionate position, set spike in bedrock
with iron post in md. of stone directly over point,
from which:
A 14" Juniper bears N28°W, 105.0 ft. mkd. $\frac{1}{4}$ S7BT
A 10" Juniper bears N41°E, 125.1 ft. mkd. $\frac{1}{4}$ S8BT

RESTORATION BY, STAMP AND DATE:

R.D. Bagett
S.D. Follweiler

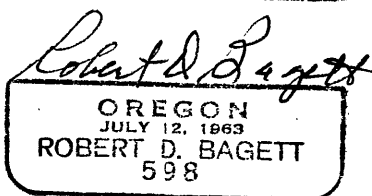


RECEIVED AND
FILED

FEB 26 1992

OFFICE OF COUNTY SURVEYOR
Attest: *[Signature]*

Jan. 21, 1992



Grant County Surveyor

EVIDENCE FOUND: Found 1-1/2"x30" galv. iron pipe with attached
Grant County Surveyor Brass Cap set in a mound of stone, but leaning
badly, I remove it and find spike set in bedrock beneath iron pipe.
From which:

A Juniper 17" diam. bears N45°13'E, 123.9 ft., with scribing visible.
A Juniper 21" diam. bears N26°00'W, 104.7 ft., with scribing visible.

Distances measured to the face of the Griffith's BT's.

DESCRIPTION OF MONUMENTS AND ACCESSORIES SET AND METHODS USED:
Show how trees are scribed and basis of bearings, including compass var.

At the corner point: Directly over the fd. spike, I reset the found iron
pipe monument with brass cap marked as shown. I add no marks.

MONUMENT MARKED

From which I SCRIBE NEW BEARING TREES:

A Juniper 13"diam., bears N.1°E, 143.7 ft. mkd.
 $\frac{1}{4}$ S7 CSBT.
A Juniper 9"diam., bears S.7°E, 112.1 ft. mkd.
X CSBT.

GRANT COUNTY
SURVEYOR
T8S R30E

NEW CORNER ACCESSORY: I DESIGNATE A NEW REFERENCE POINT:
A 5/8"x 30" iron pin with attached alum. cap
bears S39°24'W, 118.1 ft. marked "BGA SURVEY MARKER
6+32.5 30 FT". This is a right of way monument on the
South side of Co. Rd. No. 15, see Map of Survey No. 1194.
I refurbished the mound of stone with a 4 ft. base raised to top of cap.
Used true bearings and EDM measuring to the sidecenter at rootcrown of the
BT's. Painted BT blazes with red timber marking paint and attached Grant
County Surveyor BT tags to all BT's.

$\frac{1}{4}$
S7 | S8
1969
OPLS 644